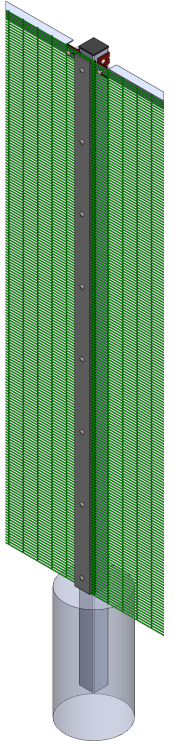
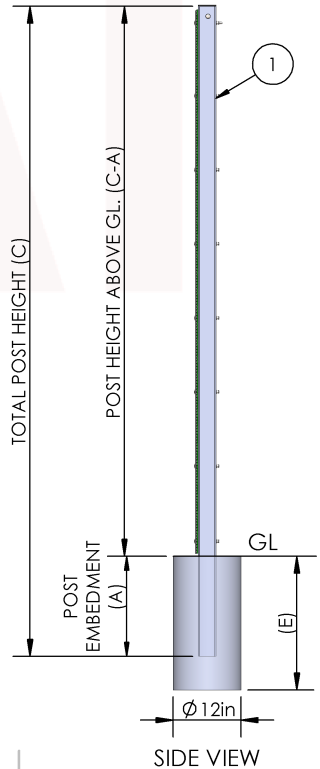
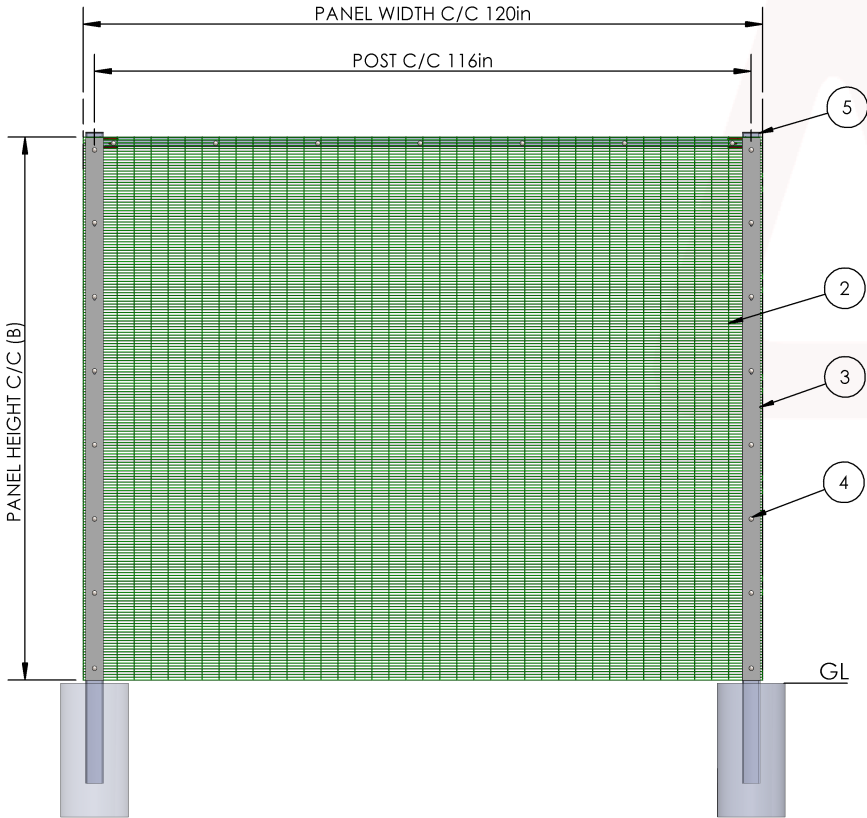
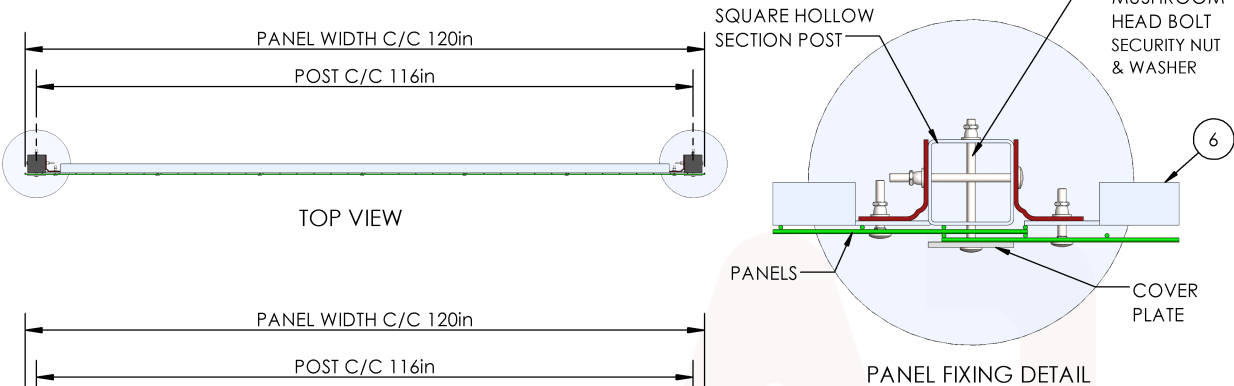


SYSTEM HEIGHT	POST EMBEDMENT (A) (inches)	PANEL HEIGHT (B) (inches)	TOTAL POST HEIGHT (C) (inches)	FOUNDATION DEPTH (E) (inches)
4ft	24	48	72	30
5ft	24	60	84	30
6ft	24	72	96	30
7FT	36	84	120	42
8FT	36	96	132	42
10FT	42	120	162	48
ABOVE 10FT	AVAILABLE ON REQUEST			

NOTES: GENERAL

- ALL DIMENSIONS ARE IN inches UNLESS SPECIFIED

SR. NO.	ITEM	DESCRIPTION
01	FENCE POST	BASED ON APPLICABLE HEIGHT & WIND LOAD, 2-3/8" TO 4" SQUARE HOLLOW SECTION AS PER ASTM A500.
02	PANEL	MESH SIZE : 3"x0.5" WIRE Ø: 11ga TO 4ga
03	COVER PLATE	3/16" THK.
04	NUT & BOLT	5/16" LONG MUSHROOM HEAD BOLT WITH SECURITY NUT AND WASHER.
05	POST CAP	TO SUIT WITH POST.
06	TOP RAIL	EQUAL ANGLE 2"x2"



THIS DRAWING, AND INFORMATION HEREWITH, MAY BE COVERED BY A PATENT OR PATENT PENDING DESIGNATION, AND IS ALSO CONFIDENTIAL AND PROPRIETARY IN NATURE. THE INFORMATION CONTAINED IN THIS DRAWING IS THE SOLE PROPERTY OF A1 AMERICAS SECURITY GROUP, LLC. ANY REPRODUCTION IN PART OR AS A WHOLE WITHOUT THE WRITTEN PERMISSION OF A1 AMERICAS SECURITY GROUP, LLC, IS PROHIBITED.



9727 TANNER RD.  
HOUSTON, TX 77041

DRAWING TITLE : A1 ArmorMesh Level I

DRAWING NO. : WM03250029R0

SCALE : NTS

SHEET NO. : 1 OF 1

PROJECTION : 

	DESCRIPTION :	DATE :
DRAWN BY :	YASH CHAVAN	01.29.2025
CHECKED BY :	MEHUL JADHAV	01.29.2025
APPROVED BY :	RUPESH TALAGERI	01.29.2025